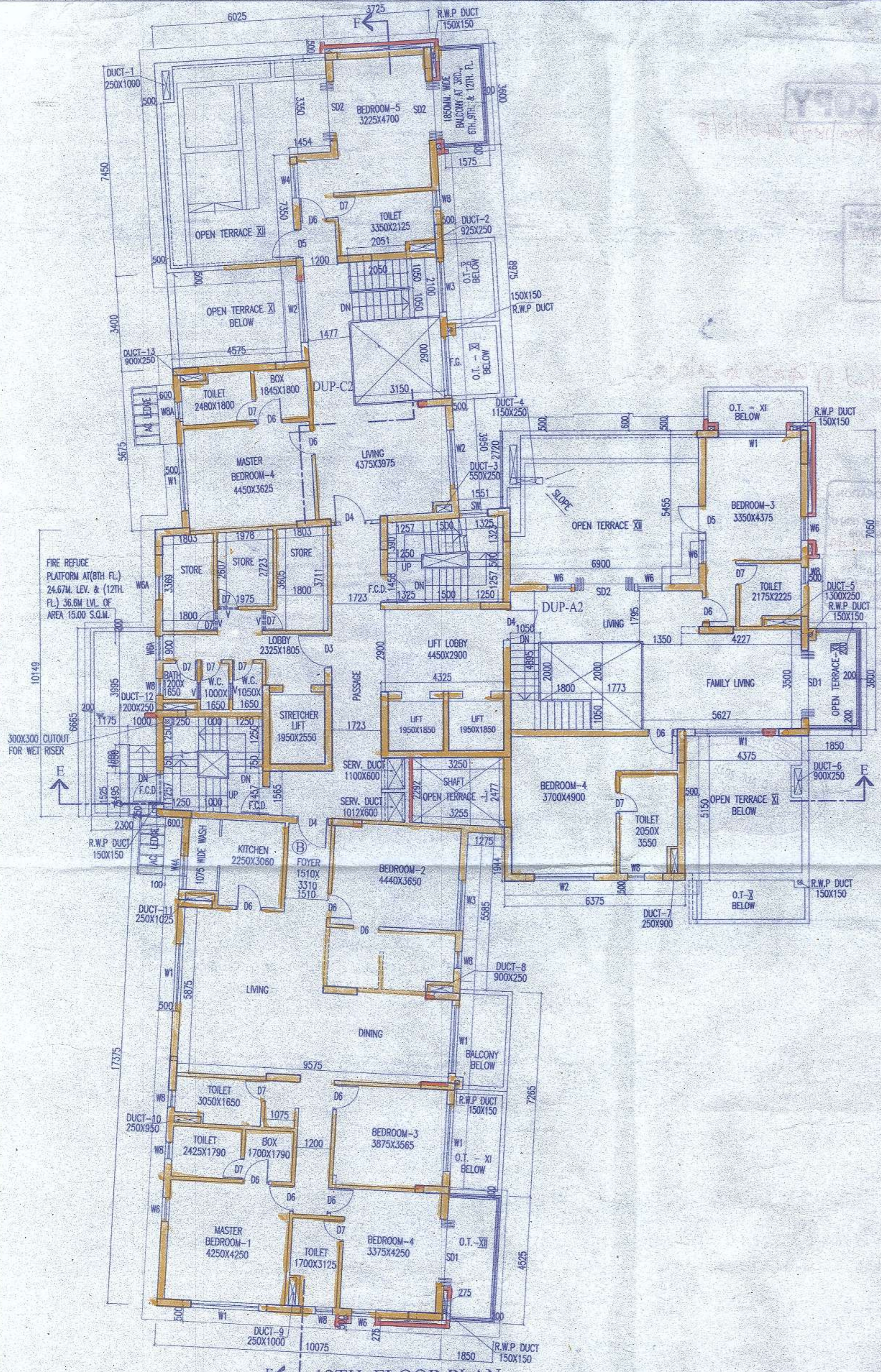
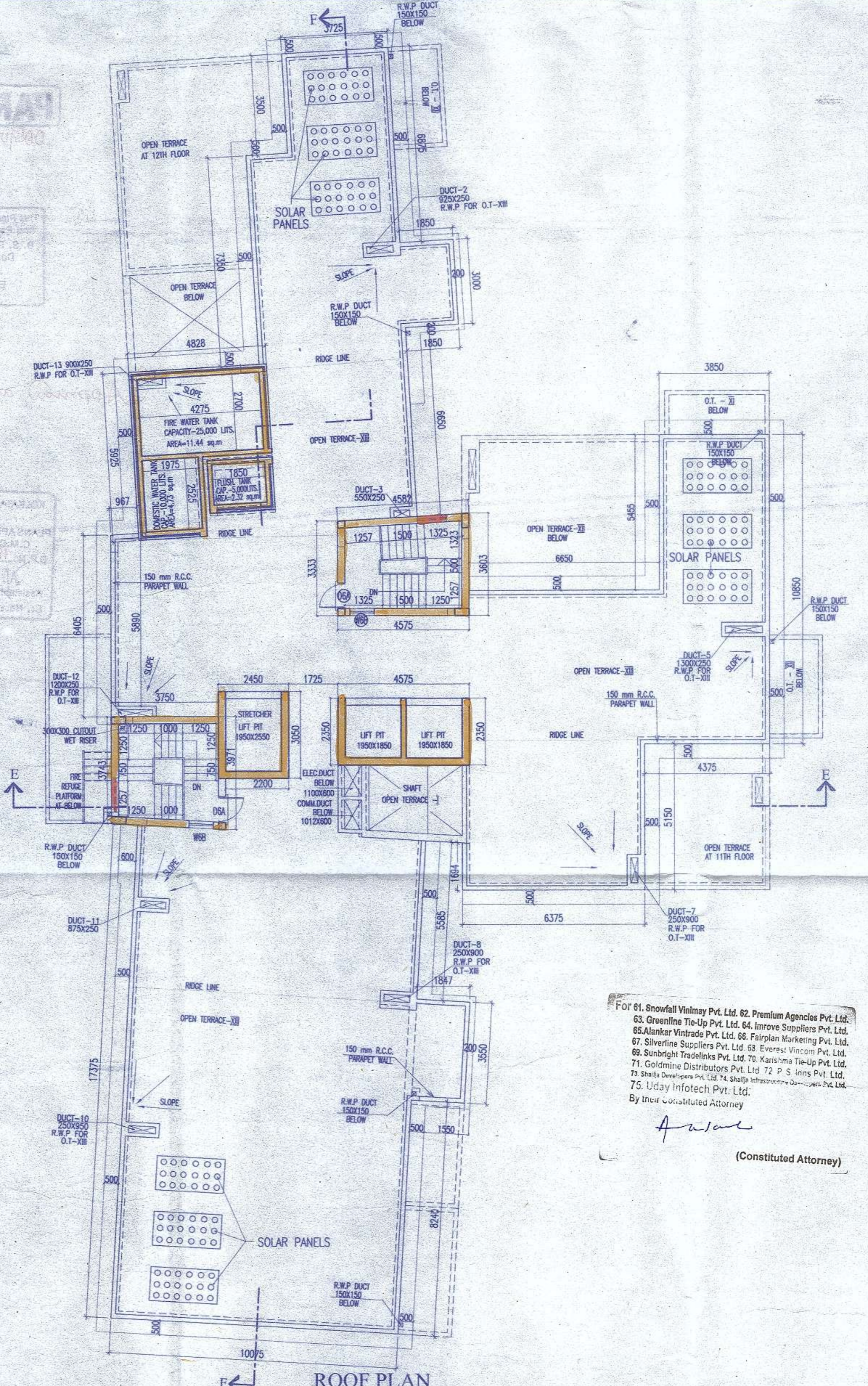


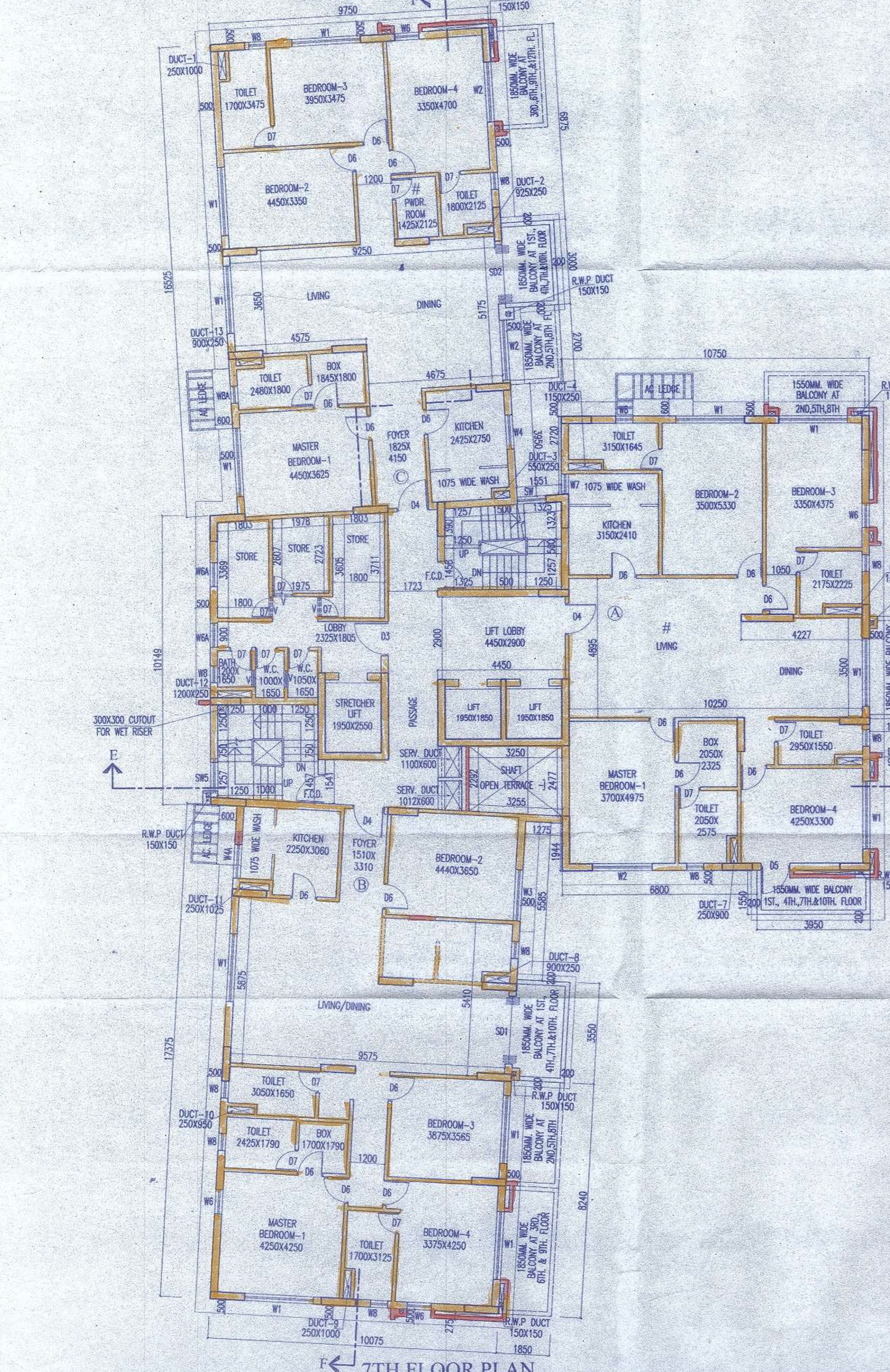
PARTY COPY



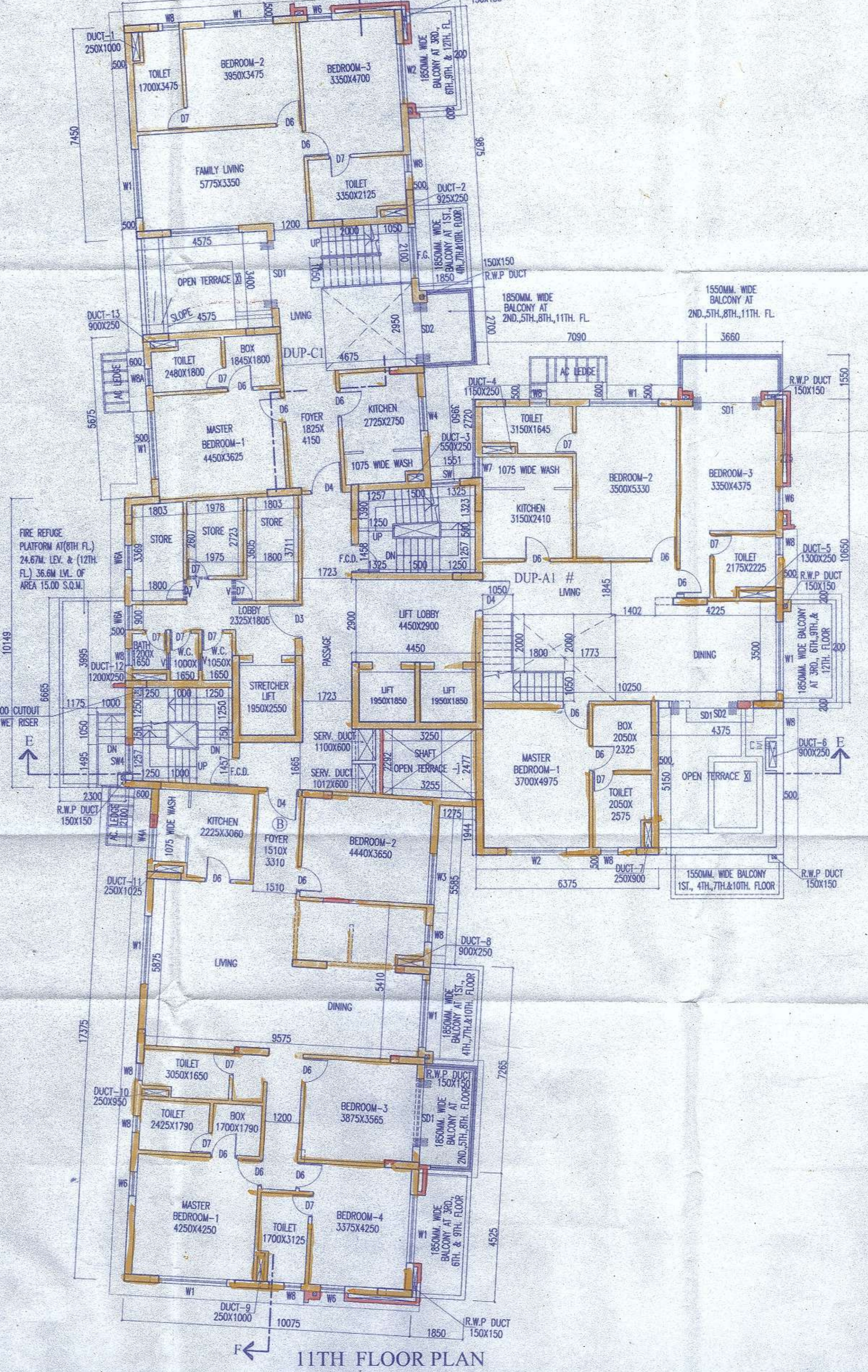
12TH FLOOR PLAN



ROOF PLAN



7TH FLOOR PLAN



11TH FLOOR PLAN

NO	SILL	LINTEL	SIZE
DW1	2450	2450	9450X2450
DW2	2450	2450	4920X2450
DW3	2450	2450	5350X2450
DW4	2450	2450	4995X2450
DW5	2450	2450	3850X2450
DW6	2450	2450	3150X2450
DW7	2450	2450	3200X2450
DW8	2450	2450	3600X2450
DW9	2450	2450	2640X2450
D2	2150	2150	1800X2150
D2A	2450	2450	1800X2450
D3	2450	2450	1200X2150
D4	2150	2150	1100X2150
D5	2150	2150	1000X2150
D5A	2150	2150	1075X2150
D6	2150	2150	900X2150
D6A	250	2300	900X2050
D7	2150	2150	750X2150
SD1	2150	2150	2400X2150
SD2	2150	2150	2100X2150
SD3	2150	2150	1800X2150
F.C.D	2150	2150	1000X2150
SW	250	2150	1200X1800
SW1	250	2150	1000X1800
SW2	350	2150	850X1800
SW3	350	2150	1200X1400
SW4	350	2150	1125X1200
SW5	350	2150	1125X1800
W1	350	2150	2400X1800
W1a	350	2150	2250X1800
W2	350	2150	2100X1800
W3	550	2150	1800X1800
W4	1100	2150	1200X1800
W4A	350	2150	1200X1800
W4B	350	2150	1200X1800
W5	350	2150	1650X1800
W5A	1100	2150	1650X1050
W5B	350	2150	1650X1800
W6	350	2150	850X1800
W6A	950	2150	850X1200
W6B	950	2150	850X1200
W6C	350	2150	600X1800
W6D	1200	2150	850X950
W7	350	2150	700X1800
W7A	350	2150	725X1800
W8	1250	2150	600X900
W8A	250	2150	700X1800
W8B	1250	2150	575X900
F.G.	350	2450	13700X2150X100

For 1. Clarity Barter Pvt. Ltd. 2. Himadri Tirop Pvt. Ltd. 3. Kallindi Agency Pvt. Ltd. 4. Anurag Enclave Pvt. Ltd. 5. Anurag Hirse Pvt. Ltd. 6. Gurukul Consultants Pvt. Ltd. 7. Manabharan Pvt. Ltd. 8. Redhym Infrastructures Pvt. Ltd. 9. Uplink Commercial Pvt. Ltd. 10. Umabala Infrastructures Pvt. Ltd. 11. Kazzara Tirop Pvt. Ltd. 12. Shree Vinayak Villa Pvt. Ltd. 13. Umabala Hirse Pvt. Ltd. 14. Kyal Promoters Pvt. Ltd. 15. Kyal Hirse Pvt. Ltd. 16. Kyal Real Estate Pvt. Ltd. 17. Kyal Residences Pvt. Ltd. 18. Kyal Complex Pvt. Ltd. 19. Kyal Realtors Pvt. Ltd. 20. Lakshya Distributors Pvt. Ltd. By their Constituted Attorney

A. Wal (Constituted Attorney)

For 21. Shreevil Distributors Pvt. Ltd. 22. Pannama Tirop Pvt. Ltd. 23. Sagarwala Tirop Pvt. Ltd. 24. Liberal Barter Pvt. Ltd. 25. Sagarwala Pvt. Ltd. 26. Uday Advisory Services Pvt. Ltd. 27. Shreevil Agency Pvt. Ltd. 28. Kyal Housing Pvt. Ltd. 29. Rishi, Promoters Pvt. Ltd. 30. Rishi Enclave Pvt. Ltd. 31. Rishi, Promoters Pvt. Ltd. 32. Rishi Enclave Pvt. Ltd. 33. Rishi, Promoters Pvt. Ltd. 34. Rishi, Promoters Pvt. Ltd. 35. Anurag Hirse Pvt. Ltd. 36. Anurag Hirse Pvt. Ltd. 37. Anurag Hirse Pvt. Ltd. 38. Anurag Hirse Pvt. Ltd. 39. Anurag Hirse Pvt. Ltd. 40. Anurag Hirse Pvt. Ltd. By their Constituted Attorney

A. Wal (Constituted Attorney)

For 41. Mimpoo Mahanta Pvt. Ltd. 42. Ananya Commercial Pvt. Ltd. 43. Piyush Vinayak Pvt. Ltd. 44. Piyush Vinayak Pvt. Ltd. 45. Piyush Vinayak Pvt. Ltd. 46. Piyush Vinayak Pvt. Ltd. 47. Piyush Vinayak Pvt. Ltd. 48. Piyush Vinayak Pvt. Ltd. 49. Rocket Vinayak Pvt. Ltd. 50. Rocket Vinayak Pvt. Ltd. 51. Rocket Vinayak Pvt. Ltd. 52. Rocket Vinayak Pvt. Ltd. 53. Rocket Vinayak Pvt. Ltd. 54. Rocket Vinayak Pvt. Ltd. 55. Rocket Vinayak Pvt. Ltd. 56. Rocket Vinayak Pvt. Ltd. 57. Rocket Vinayak Pvt. Ltd. 58. Rocket Vinayak Pvt. Ltd. 59. Rocket Vinayak Pvt. Ltd. 60. Rocket Vinayak Pvt. Ltd. By their Constituted Attorney

A. Wal (Constituted Attorney)

CERTIFICATE OF STRUCTURAL ENGINEER.

THIS IS TO CERTIFY THAT THE STRUCTURAL DESIGN AND DRAWINGS OF BOTH FOUNDATION AND SUPER STRUCTURE OF THE BUILDING HAS BEEN MADE BY ME CONSIDERING ALL POSSIBLE LOADS INCLUDING THE SEISMIC LOADS AS PER THE NATIONAL BUILDING CODE OF INDIA AND CERTIFIED THAT IT IS SAFE AND STABLE IN ALL RESPECTS. SOIL TEST REPORT IS PREPARED BY M/S BOSE ENGINEERS OF 74/71, SULTAN ALAM ROAD, KOLKATA-700033

SANJIV J. AREKH
M.E. (STRUCT.), B.C.E., PGCOM,
C. ENG. (H), M.S.C.E., ASCE, F.I.E. (F-181020-4)
E.S.E. NO. 104/H.M.C.C.

SIGNATURE OF STRUCTURAL ENGR.

SANJIV GUHA
BSC (C.E.), F.I.E. (F-181020-4)
CHARTERED ENGINEER
ENLISTED STRUCTURAL
REVIEWER 66/16 H.M.C.C.

SIGNATURE OF STRUCTURAL REVIEWER

CERTIFICATE OF ARCHITECT.

I DO HEREBY CERTIFY WITH FULL RESPONSIBILITY THAT THE BUILDING PLAN HAS BEEN DRAWN UP AS PER M.C.C. BUILDING RULE-2009 AS AMENDED FROM TIME TO TIME. THAT THE WIDTH OF THE ABUTTING ROAD CONFORM WITH THE PLAN AND IT IS A BUILDABLE SITE NOT A TANK OR A FILLED UP TANK. THE SITE PLAN KEY PLAN AGREES WITH THE SITE. THE PLOT IS DEMARCATED BY BOUNDARY WALLS & MEASUREMENTS TALLY WITH THE REGD. DEED PLAN. THE EXISTING STRUCTURE AS SHOWN IN PLAN, OCCUPIED BY OWNERS AS PER OWNERS UNdertaking.

JAY PRAKASH BHARAT KUMAR ARDRAVAL
B. Arch., A.I.A.
Reg. No. CA/18/10038
ARCHITECT B.L. NO. 321(A)

SIGNATURE OF ARCHITECT.

TITLE: 7TH FLOOR PLAN, 11TH FLOOR PLAN, 12TH FLOOR PLAN, ROOF PLAN, BLOCK - 3

PROJECT: PLAN SHOWING CHANGES U/R 28(2a) & (2b) OF KMC BUILDING RULE-2009 OF RESIDENTIAL COMPLEX WITH BLOCK-1 (G+2), BLOCK-2 TO 4 (G+3) AND BLOCK-5 (G+6) AT PREMISES NO. 49A, MANGALAN BANERJEE ROAD, KOLKATA-700 038, WARD NO. - 118, BOROUGH - XIII, P.S. - BEHALA, SANCTIONED VIDE B.P. NO. 2017/130182 DATED 16/12/2017, SUPERSEDING B.P. NO. 2015/30048 DATED 14/05/2015

ARCHITECTS: AGRAWAL & AGRAWAL, BARODA, KOLKATA

SCALE: 1:100, DATE: 05.07.19, DEALT: RAJAT, CHECKED: SHEILA

PARTY'S COPY

008 (1/2-26 (2) (C) (a) (xii) 18-19 dt-28/08/18

This Plan is To Be Treated As Part
And Parcel And Conveys To
B. S. Plan No. 203 (2) 18
Dated 22/12/17
Ex. Engineer (C-8)
Br. No. 249

Approved as per approval of 21/08/18 dt-24/08/18

KOLKATA MUNICIPAL CORPORATION
BUILDING DEPTT.
PLANS APPROVED U/R 26 (2a) & (2b) of
C.M.C. BUILDING RULES 2009
B.P. No. 18 dt-24/08/18
Assistant Engineer Ex. Engr. (Civil)
Br. No. 249 Br. No. 249

